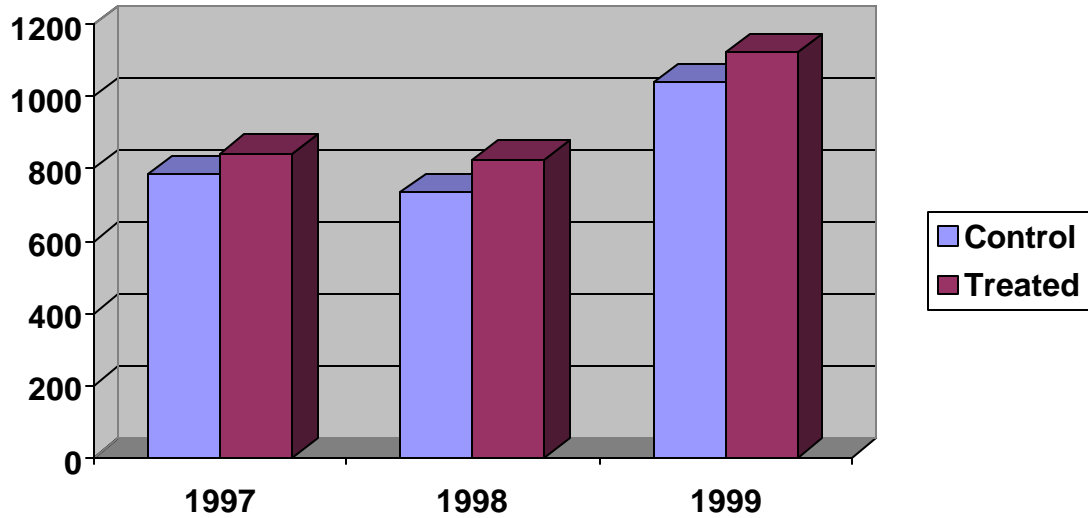


# COTTON TEST # 100



**Treatment :** 3/4 oz GS 48 per 50 lbs of seed (applied on the seed)  
1 pt/acre Sul 15 Plus & 8 oz/acre GS 70 applied pin head square  
8 oz/acre GS 70 applied 10 days later

**This represents a yield increase of 76 lbs lint/acre for an input of \$21.50 per acre. At \$0.50 lint, this is a return of \$38.00 per acre.**