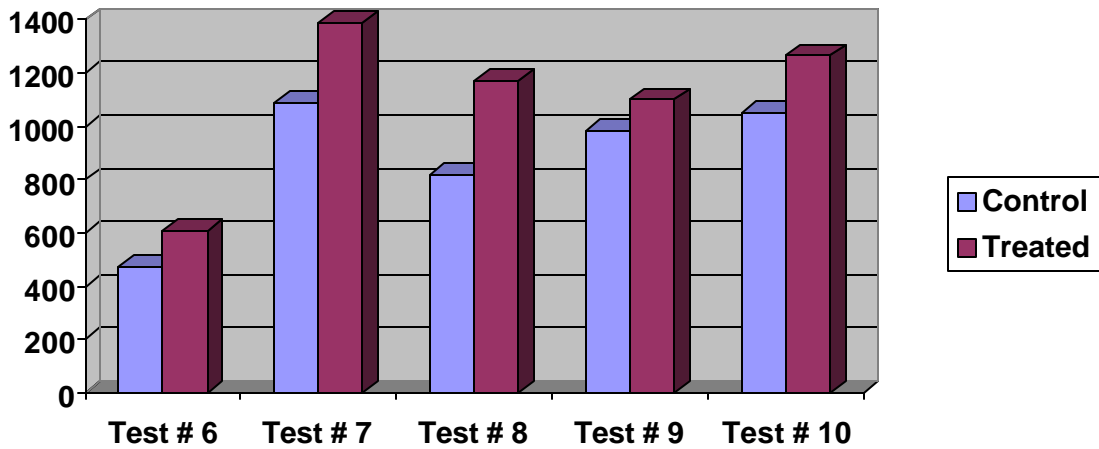
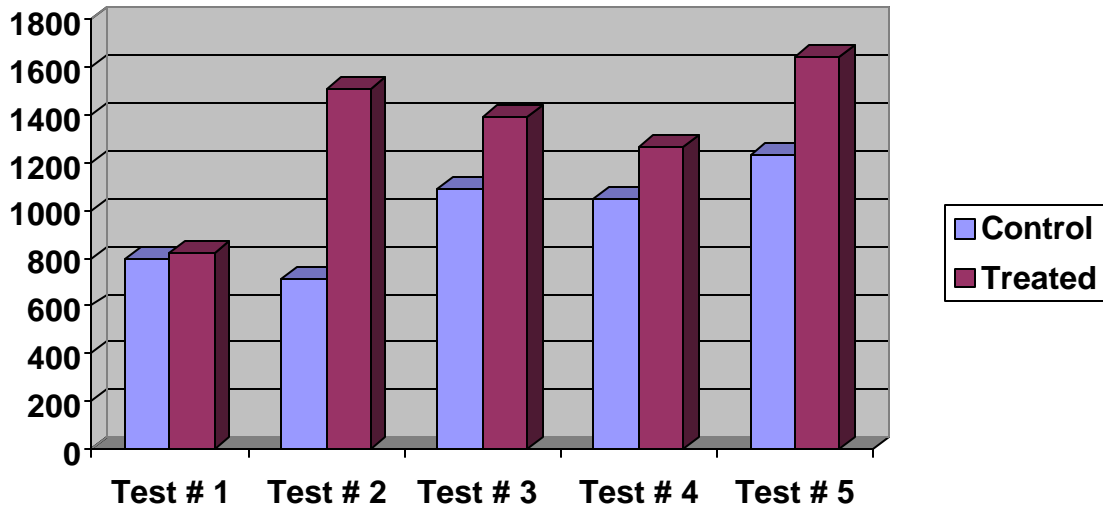


COTTON TEST # 101



**Treatment : 1 pt/acre Sul 15 Plus & 8 oz/acre GS 70 at pin head square
1 pt/acre Sul 15 Plus & 8 oz/acre GS 70 applied again 14
days later**

**This represents an average yield increase of 287.9 lbs of lint to the acre
for the above 10 tests. The input per acre was \$23.74.**

**At \$0.50 per lb of lint, this is a return of \$143.45 per acre average on the
above 10 tests.**

Field Test in AL, MS, TX, & LA