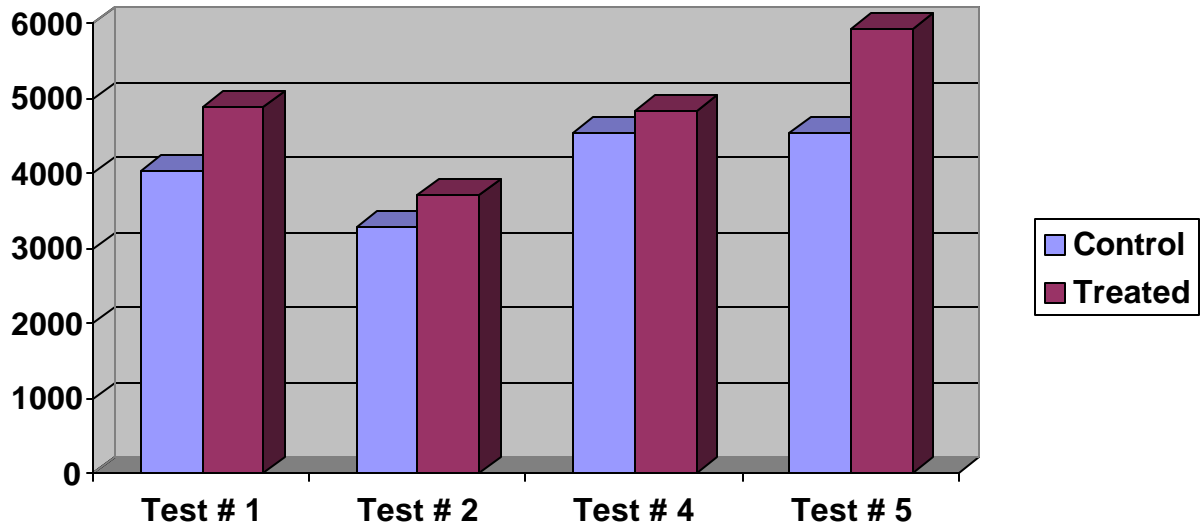


# PEANUT TEST # 100



**Treatment : 1/2 pt/acre Sul 15 Plus & 1/2 lb GS 48 @ 1<sup>st</sup> fungicide application.**

**1/2 pt/acre Sul 15 Plus & 1/2 lb GS 48 @ 2<sup>nd</sup> fungicide application.**

**1/2 pt/acre Sul 15 Plus with each additional fungicide application.**

**This test indicates a yield increase of 698 lbs/acre over the control for an input of \$28.50 per acre. At \$600 ton peanuts, this is a return of \$209.40 per acre. **NOTE : The treated peanuts averaged grading two points better than the control.****

**Field Test  
AL & GA**